



Check Mate
Advanced Vehicle Tracking System

2020

Company Profile





Index

About Check Mate	02
CEO Message	03
Products	04
Fleet Product	05
Technical Information	06
Organization Chart	07
Installation, Maintenance & Operation	08
Our Clients & Business Partners	09





About Check Mate

Check Mate was established in year 2006 situated in Karachi with Head Office, Warehouse, Workshop for service after sales fully equipped with all the necessities. **Check Mate** specializes in advance and Contemporary vehicle security system for the vehicle corporate & Individual and now working under with the entire new dynamic & professional team.

We have qualified Engineers, Administration & Marketing staff to look after sales, Marketing, Installation & Monitoring, service after sales of the corporate and individual clients.

Check Mate offers a complete range of products and services including tracking for individuals as well as fleet management packages for small and large companies. Our trademark product is the **Check Mate** Vehicle Tracking System which incorporates an array of impressive theft prevention features and works with GPS/GPRS/GSM to give superior accuracy in the location of the vehicle. We are dedicated in providing high quality LBS (location based services) as well as customer service based on integrity and dependability to our Customers supported by dedicated team in all over Pakistan.

Anti Jammer

GSM / GPS / GPRS Technology

Device Engineer

Electric Work

Modification of Device Equipment

Project Management

Mission

The Mission of CheckMate to create value for our customers by offering quality services, trusted dealing and accurate technical advices.

Increase availability of Vehicle Tracking System within the customer is budget.

To provide the best tracking system which are composed of the high quality material with strict quality control and extensive testing before the installation of the tracking system in vehicles / Trucks We are committed to provide this high quality customer service.

We believe in integrity, honesty, dedication and dependability.

Values

Quick & prompt services.
Team work & rewards.
Profitability with honesty.

Vision

The Vision of CheckMate is too recognized as the leading trusted name is Pakistan. To make possible the best perfect effort to provide quality of Vehicle Tracking System Devices for their corporate and individual vehicles.



CEO Message

Our mission is clearly focused on exclusive strategies to ensure our Customers get quality product in quantity with entire satisfaction services. All these responsibility are aimed to have in our leading position in Vehicle Tracking System market to ensure continuous growth which can Promote **Check Mate** as a termed in Vehicle Tracker sectors.

Our organization offers a complete security and services including Tracking for individuals as well as fleet management packages. Our Trademark product is the **Check Mate** vehicle tracking system which Incorporates of impressive theft prevention features and works with GPS to give superior accuracy in the location of the vehicle.

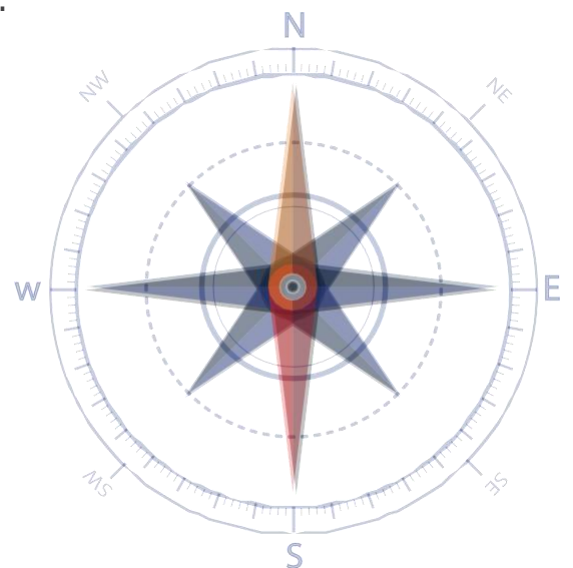
Check Mate can offer customers, something they cannot get elsewhere to the best matching. We add the best Anti Jammer can help you Complete security more competitively from thief. In working with our valued customers we have played a vital role in the Vehicle Tracking System of Pakistan commercial industrial & individual and Corporate Sector.

Check Mate innovative vehicle tracking solutions for your business there by increasing efficiency & comfort. It is our unique ability to provide solutions to our customers that set us apart. We care how our customers feel about our products. Most importantly, we believe in long lasting relationships.

We work hard & harder round the clock to achieve the best out of Whatever work we carry out each day to cater our client's need.

We have surely achieved the best services over all.

Sohail Nazeer Shaikh
CEO





Products

CheckMate Basic

- GSM/GPS/GPRS Technology
- Nationwide Coverage*
- 24 Hour Monitoring / Call Centre
- Location in case of emergency
- Geo fence / No Go Area
- Battery Tempering Alerts
- Snatch Recovery Assistance*
- Password Protected
- Imported product
- One year (Replacement warranty)**

CheckMate Protect

- GSM/GPS/GPRS Technology
- Nationwide coverage*
- 24 Hours Monitoring / Call center
- Location on call
- Geo fence / No Go Area
- Battery Tempering Alerts
- Immobilization / Activation
- Snatch Recovery Assistance*
- Parking protection (conditions apply)
- Password Protected
- Emergency Panic Alarm
- Imported product
- One year (Replacement warranty)**

CheckMate Plus

- Jammer Detector
- GSM/GPS/GPRS Technology
- Nationwide coverage*
- 24 Hours Monitoring/call centre
- Location on cell
- Location VIA Mobile
- Geo fence / No Go Area
- Immobilization / Activation
- Snatch Recovery Assistance*
- Parking protection (condition apply)
- Password Protected
- Battery Tempering Alerts on Mobile
- Panic Alerts on Mobile
- Web Track
- No Go Alerts on Mobile
- Parking protection on control via on mobile
- Over speeding Alert on Mobile
- Immobilization / Activation
- Emergency Panic Alarm
- Imported Product
- One year (Replacement Warranty)**
- Mobile Alerts

*GSM Coverage area must be there. **In incase Device Burnt, Water Effectd or any Physical Damage



Fleet Products

CheckMate Fleet

- GSM/GPS/GPRS Technology
- 24 Hour Monitoring / Call Center
- Various Sensors
- Geo Fence / No Go Areas
- Route Deviation
- Container Load
- Trailer Door Alert
- Over Speeding
- Fuel Safety
- Seat Sensor
- Immobilization / Activation
- Battery Tampering Alerts
- Snatch Recovery Assistance*
- Password Protected
- Panic Alarm
- Voice Communication
- Web Track
- Movement Report
- Base Station
- Emergency Assistance*



Benefits of CheckMate Fleet

CheckMate® tracking system provides GPS fleet management that
Reduces fleet cost and Increase the fleet efficiency.

Reduces rising fleet expenses.

Reduces excess use of fuel.

Reduce car & truck operation cost.

Reduce time spent at unauthorized location.

Provide wireless down load of historical date.

Locate where your cars and trucks have been anytime, anywhere.

*GSM Coverage area must be there. **In incase Device Burnt, Water Effected or any Physical Damage

Technical Information



GNSS

GNSS GPS, GLONASS, GALILEO, BEIDOU, SBAS, QZSS, DGPS, AGPS

Receiver 33 channel

Tracking sensitivity -165 dBm

Accuracy < 3 m

Hot start < 1 s

Warm start < 25 s

Cold start < 35 s

Cellular

Technology GSM 2G bands Quad-band 850 / 900 / 1800 / 1900 MHz

Data transfer GPRS Multi-Slot Class 12 (up to 240 kbps), GPRS Mobile Station Class B

Data support SMS (text/data)

Power

Input voltage range 6 - 30 V DC with overvoltage protection

Back-up battery 170 mAh Li-Ion battery (0.63 Wh)

Bluetooth

Specification 4.0 + LE Supported peripherals Temperature and Humidity senso

Operating environment

Operating temperature

(without battery) -40 °C to +85 °C

Storage temperature (without battery) -40 °C to +85 °C

Operating humidity 5% to 95% non-condensing

Ingress Protection Rating IP54

Battery charge temperature 0 °C to +45 °C

Battery discharge temperature -20 °C to +60 °C

Battery storage temperature -20 °C to +35 °C for 1 month -20 °C to +30 °C for 6 months

Features

Sensors Accelerometer

Scenarios

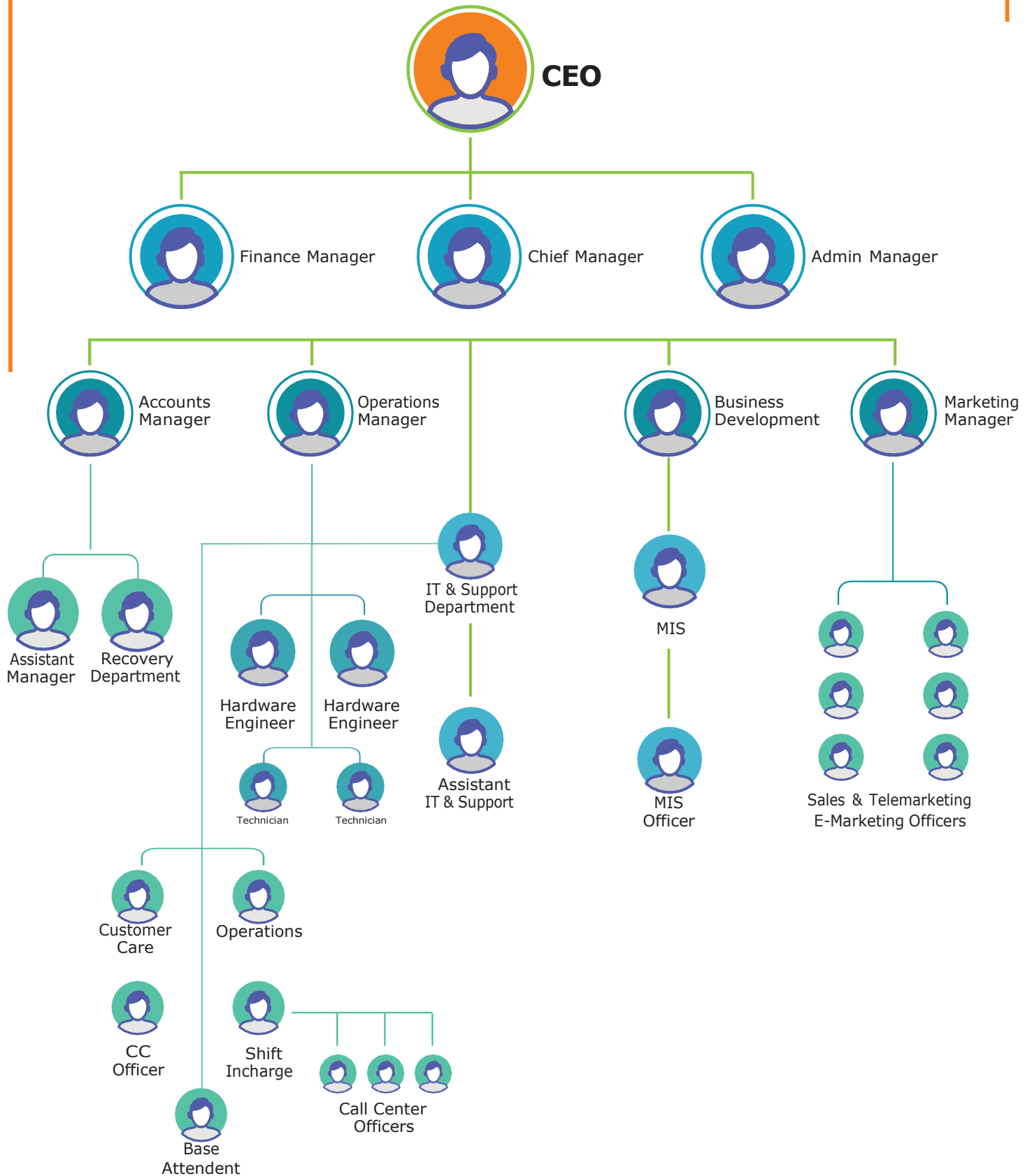
Green Driving, Over Speeding detection, Jamming detection, GNSS Fuel Counter, DOUT Control Via Call, Excessive Idling detection, Unplug detection, Towing detection, Crash detection, Auto Geofence, Manual Geofence, Trip Sleep modes GPS Sleep, Online Deep Sleep, Deep Sleep, Ultra Deep Sleep Configuration and firmware update FOTA Web, FOTA, Teltonika Configurator (USB, Bluetooth), FMBT mobile application (Configuration) SMS Configuration, Events, DOUT control, Debug GPRS commands Configuration, DOUT control, Debug Time Synchronization GPS, NITZ, NTP Fuel monitoring LLS (Analog), OBDII dongle Ignition detection Digital Input 1, Accelerometer, External Power Voltage, Engine RPM (OBDII dongle)

Certification & Approvals

Regulatory CE/RED, E-Mark, EAC, RoHS, REACH



Organizational Chart





Installation, Operation & Maintenance

Meet the Challenges

CheckMate® are striving to ponder over all problems / challenges of new era in the field of Vehicle Tracking System & to make the market Challenges much easier & achievement of object much closer.

Quality Standards

CheckMate® have a highly competent professional Engineering having international methodology & technology to serve our customers to meet their requirements & satisfaction at their expense at the same time our employers satisfaction to ensure a resultant increase in mutual trust which Enable us to achieve a high standards of service.

Engineering Services

Over the years we achieve built a reputation for excellent customers service. Being service oriented company basically we are trained & well equipped to effectively handle all sorts problems related to Vehicle Tracking System.

AMC (Annual Monitoring Contract)

For regular preventive monitoring of Vehicle Tracker System through professional people, AMC are signed with our clients, Through AMC you can run your Vehicle trouble free throughout the year, with the experienced technical staff just one phone call away.

Low Monitoring & Maintenance Cost

Now you can eliminate costly service tooling. We do it all for you. Our annual agreements typically cover complete maintenance of the equipment, so you don't have to.

OVERVIEW OF CheckMate®

- Sales & Maintenance of Vehicle Tracking system including installation, testing & monitoring.
- Through Annual Monitoring Contract you can run your vehicle trouble free throughout the year, with the experienced service staff just one phone call away.
- Operational fault rectification (Troubleshooting) & emergency repairs on vehicle tracker system.

Our Clients

- GFS builder
- Askari Bank
- Bank Al Habib
- Asia insurance
- Bank of Punjab
- Barny Car Autos
- Affaq foundation
- Pak Qatar Takaful
- Priemer Insurance
- Blue sky transport
- Shaheen insurance
- Silver star insurance
- East West Insurance
- Sardar Bahadur Khan University
- Quetta development authorityAffaq foundation
- BTEVTA (Balochistan technical education & vocational training Authority)



Our Business Partners

- PTCL
- Mobilink
- Teltonika
- K-Electric
- UBL bank
- MobiCash
- HMB bank
- Strom Fiber
- TCS Courier
- Leopards courier
- Habib Computers
- Sigma Electronics
- Telenor Easypaisa



Head Office

No.115-O, Block-2, PECHS Karachi

Phone No: 0092-21-34546738-48, 34546742

Fax No: 0092-21-34528290

Technical Support Branches

Lahore

Multan

Faisalabad

Gujrat

Sahiwal

Sialkot

Bahawalpur

Quetta

Peshawar

Technical Support Branches

Lahore-Multan – Faisalabad – Gujrat – Sahiwal – Sialkot – Bahawalpur –Quetta-Peshawar